

Mainstreaming housing management for Gypsy/Traveller sites



Rachel Pinchin
Deputy CEO,
Elim Housing



Jo Richardson
Professor of housing and
social inclusion,
Nottingham Trent University



Helen Scullard
Head of communities and
estates, Teign Housing



Michelle Gavin
Head of service delivery,
Friends, Families, Travellers





Nottingham
Business School
Nottingham Trent University

Planning & delivering accommodation for Gypsy/Traveller communities – the role for social housing providers

Jo Richardson

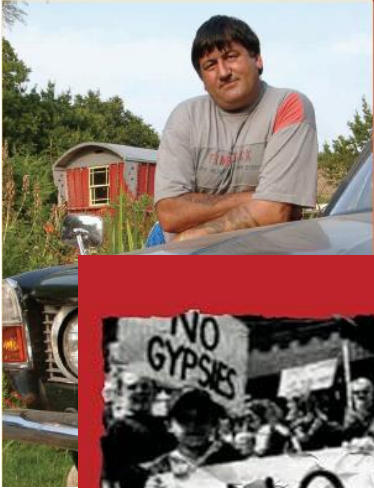
13/02/2025



Accommodation for Gypsies & Travellers

Providing Gypsy and Traveller Sites:
Contentious spaces

Joanna Richardson



Managing and delivering
Gypsy and Traveller sites:
negotiating conflict



Jo Richardson and Janie Codona MBE

GYPSIES AND TRAVELLERS

Empowerment and inclusion in British society

Edited by Joanna Richardson and Andrew Ryder

OUR LAND
OUR HOME



ROUTLEDGE FOCUS

PLACE AND IDENTITY

The Performance of Home

Joanna Richardson

R



The
Gypsy
Debate

Can discourse control?

Joanna Richardson

JRF JOSEPH ROUNTREE FOUNDATION



DE MONTFORT UNIVERSITY LEICESTER

The case(s) for site provision

- The business case (not providing sites is financially costly)
- The moral case – everyone has the right to a safe and affordable place to call home.
- The legal case – planning legislation duty (NPPF consultation just closed) and equalities legislation. Members of HDN will be particularly minded to the need to consider how we support all minoritised ethnic groups.

How important is decent accommodation?

Data on the health of Gypsy and Traveller communities show higher rates of poor physical and mental wellbeing, higher infant mortality rates, as well as poorer educational and employment outcomes. Affordable, good-quality, culturally appropriate accommodation is at the heart of resolving this.



Places we're proud of

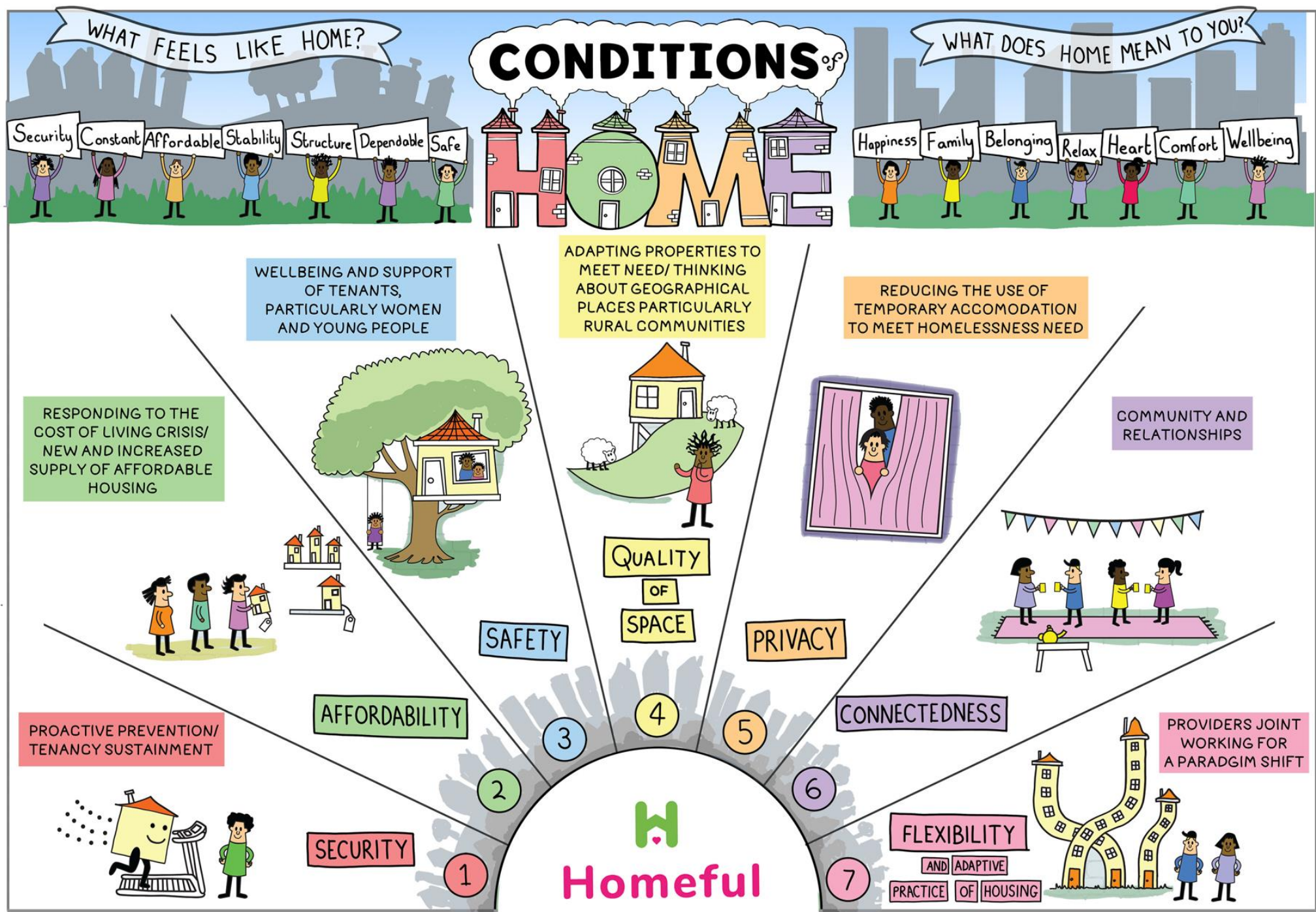


A short guide to providing and managing sites for Gypsies and Travellers

Social Landlords have a role

- It's not too hard – a small number of social housing landlords (some of whom are here in the webinar) have provided high-quality sites, following partnership working with community members.
- Properly managed sites are cost-neutral and you should consider planning for, and management of, this accommodation with the same quality mindset as more traditional housing types.
- Consider community sustainability, as much as environmental and financial sustainability – better managed sites, and those with high reported resident satisfaction are often smaller and designed/ managed in collaboration with residents (just as you would do with standard housing types).

These conditions of home apply to any and all types and styles of accommodation – including Gypsy/Traveller sites.



JOIN US FOR A CHAT AROUND THE CAMPFIRE
THEATRE & CIRCUS FIELD



THE ATCHINTAN

FEATURING (A-Z):

**BELA VARADI/BILL LLOYD/BILLY WELCH/BRYONY HARRY
/DAMIAN LE BAS/ELIJAH VARDO/EMMA BRAY
/FFTP: MAXINE VENTON, CHEZNEY NEWMAN
/FRIENDS, FAMILIES AND TRAVELLERS: ABBIE KIRKBY
/THE GORJA BAND: MARNIE KAPUTSTINSKY, PADDY ROGAN,
THOMAS MCCARTHY/JOHN DOE/ERNIE DOE/MAYLEEN DOE
/JO RICHARDSON/JOHN HENRY PHILLIPS/MARC WILLERS
/MIKE DOHERTY/SIMON RUSTON/SINDY JOYCE
/NFATS: TERENA WORLIDGE/TRAVELLER PRIDE:
RUTH SULLIVAN, MICHELLE GLAIKET/ROSE WAUDBY
/VAGZ WRIGHT**

DAYTIME FILMS, SPEAKERS AND WORKSHOPS FROM 11.00 AM - 7.00 PM
WILL BE OPEN LATE-NIGHT, WITH ORGANICALLY ORCHESTRATED
SPEAKERS, FIRESIDE MUSIC SESSIONS & STORYTELLERS.

Engage with all members of society to better understand 'home' and housing rights. It is particularly incumbent on public agencies and social housing providers to demonstrate leadership in this space - not only in the way we talk and the way public planning debate is led, but also in what we do through actually delivering and managing high-quality, affordable sites.



Communities of advice

- Advisory panel – next steps
- Sources of advice – FFT, HDN, CIH, NHF and others. Plus, for those who already manage sites – NAGTO.
- But mostly – Gypsy and Traveller communities and advocacy organisations in your area and the data that already exists from previous GTAAs in your local planning authority.



Nottingham
Business School

Nottingham Trent University

Thank you



**FRIENDS,
FAMILIES &
TRAVELLERS**

Housing Rights for Gypsy, Roma, and Traveller Communities

Michelle Gavin – Head of Development (FFT)

gypsy-traveller.org

Agenda

- About Friends, Families & Travellers
- Overview
- Accommodation
 - Chronic lack of authorised stopping places
 - Poor living conditions & lack of renter/tenant rights
 - New opportunities to positively influence policy and legislation
- The Oak Project



About Friends, Families and Travellers

- National charity that works on behalf of and in conjunction with all Gypsies, Travellers and Roma regardless of ethnicity, culture or background.
- Active in advocacy casework, policy and cultural competency training.
- Secretariat for All-Party Parliamentary Group on Gypsies (APPG), Traveller and Roma.
- Strategic partner of the Department of Health, NHS England and Public Health England as the Gypsy, Roma Traveller member organisation of the VCSE Health and Wellbeing Alliance.
- Registered Royal Society for Public Health Training Centre.



Overview



Overview of Gypsies and Travellers

- There are an estimated **300,000** Gypsies and Travellers living in the UK today
- Of this 300,000 approximately three-quarters live in 'traditional bricks and mortar' accommodation while just one-quarter live in site or roadside



- Romany Gypsies, Irish & Scottish Travellers are **legally** recognised ethnic minorities.
- Estimated **25,000** individuals have no authorised place to stop



Accommodation



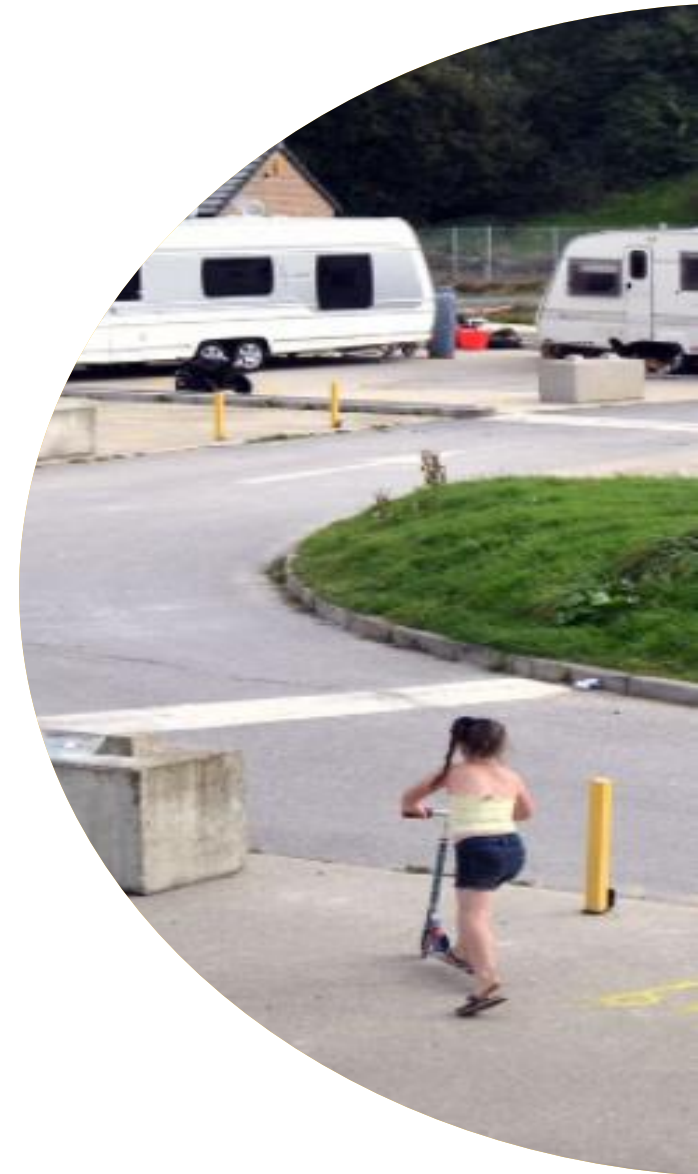
Accommodation: Lack of Provisions

Gypsies and Travellers face a chronic lack of authorised stopping places.

In 2024, Friends, Families and Travellers carried out several [Freedom of Information requests](#) in relation to site provision.

It found that:

- Just **9%** of authorities told us they had transit provision within their area.
- 332 authorities (**92%**) responded indicating that they had **no** local authority owned or managed transit sites or pitches.
- Of these, 54 (**15%**) responded to say that they held **no data** about transit provision and advised us to contact an alternative local government authority for this information.



Accommodation: Living Conditions

Traveller Sites are often scattered geographically and disconnected from other social housing.

- Sites are often owned by County Councils rather than Housing Authorities and are poorly maintained (often in a state of disrepair).
- Many of these conditions pose serious health and safety concerns, especially relating to issues with mould, pest infestations and pollution.



Accommodation: Opportunities for Improvement

Having a change of government means there are new opportunities to influence policy and legislation.

- The current Government have launched a consultation on planning reforms, leading to the Planning and Infrastructure Bill, which specifically mentions Traveller sites.
- The Home Office are considering the incompatibility judgement on the anti-Traveller measures in the Police, Crime, Sentencing and Courts Act 2022 with the Human Rights Act 1998 and we are engaging with the Draft Equality (Race and Disability) Bill.



The Oak Project

In 2022, Friends, Families and Travellers began a 3-year project funded by The Oak Foundation.

Through a collaborative approach the project addressed the lack of Gypsy and Traveller quality site provision across England.

The Oak project has:

- Through the prism of national planning policy and equality legislation we will work with partners to influence those councils that are not including Traveller needs in their Local Development Plans.
- By encouraging Housing Associations to address needs in their housing plans.
- In collaboration with other grassroots groups and partner organisations, such as London Gypsy Travellers and Moving for Change.





**FRIENDS,
FAMILIES &
TRAVELLERS**

Thank you

gypsy-traveller.org